

WOODHOUSE ACADEMY

UNIFORM POLICY

Reviewed Spring 2022
To be reviewed: Spring 2023

The wearing of full school uniform is expected as an integral part of the school ethos, which promotes positive attitudes, high standards, and a sense of personal pride. In our view, for a school uniform to be successful it must be:

1. Uniform and not open to various interpretations
2. Distinctive and smart
3. Easily and readily available
4. Reasonably priced

Students are expected to wear the correct school uniform as listed below:

| | |
|----------------------|--|
| Blazer | Green blazer with school badge attached to the blazer. Only available from the official school stockists, Clive Mark & Smart School Uniform. |
| Jumper | Long sleeve 'V' neck black jumper (optional). |
| Skirt | Black knee-length skirt which should not be clingy nor shiny. |
| Trousers | Plain black tailored trousers. The trousers must have a hem and not be frayed or have a wide or narrow bottom. Trousers should not be denim, cord, lycra material or hipster style. The bottom of the trouser should sit on the shoe and not cling to the leg. |
| Blouse/Shirt | Girls – White shirt-type blouse with plain, undecorated collar (not polo or lycra style). Boys – Plain white shirt (not polo shirt). If a pupil wishes to wear a 'skin' type layer underneath their shirt, it should be white. Shirts should be tucked in at all times. |
| Shoes | Plain black shoes (not open-toe design, trainers, pump or canvas shoes, mules or sling backs – no coloured laces or stitching). Trainers are only allowed if accompanied by a doctor's note. Boots are not acceptable. |
| Socks/Tights | Girls – Plain white or black socks or tights. Boys – Plain white or black socks. |
| Tie | Green and silver stripes as sold by our official stockist, Clive Mark & Smart School Uniform. Year 8 prefects are issued with a plain green tie with small coloured stripes. The top button must be fastened and the tie knot placed at the collar of the shirt. The tie should be kept at a reasonable length approximately in line with the navel. |
| Belts | Only plain black belts are acceptable. |
| Outdoor coats | Sensible outdoor coats are acceptable. Sweatshirts or hoodies of any description do not qualify as coats and are not acceptable. |
| Jewellery | One wrist watch is acceptable. No other jewellery should be worn. A pair of small plain studs may be worn in the ears (maximum of 2). Earrings must not be worn |

WOODHOUSE ACADEMY

UNIFORM POLICY

Reviewed Spring 2022
To be reviewed: Spring 2023

under any circumstances when participating in PE. The the school will not be held accountable for any missing, lost, misplaced or broken jewellery.

Hair Pupils with long hair must fasten it back in laboratories and practical rooms and for PE. Extreme hairstyles will not be tolerated (no hair shorter than number 1, no shapes cut into hair, no unnatural colours or combinations). The school reserves the right to make the final decision on what constitutes an extreme hairstyle. Hairbands and bobbles should be neat and plain.

Make-up Pupils are not allowed to wear make-up. This includes nail varnish and false nails. Any pupil in breach of these rules will be expected to remove it immediately.

Summer Items During the summer months pupils are allowed to wear tailored black shorts/culottes or a green gingham summer dress.

PE

| PE Kit (Boys & Girls) | | Swimming Kit |
|------------------------------------|---|-------------------------------|
| School hoodie* | Shin pads (compulsory for all football/hockey activities) | One-piece costume/trunks |
| Black/Green reversible polo shirt* | Gum shield (compulsory in Y7 and Y8) | Swimming Cap |
| White ankle/sports socks | Football boots | Towel |
| Black shorts | Indoor Trainers | Goggles (consent is required) |
| Green/black socks | Black sport leggings* Black tracksuit bottoms | |

*supplied by either Clive Mark or Smart School Wear

Health and Safety

- Football boots worn for soft ground use
- A gum shield for rugby/hockey
- Shin pads for football/hockey
- It can be uncomfortable and unpleasant to wear clothes previously worn during P.E. Therefore spare underwear should be brought to school on P.E. days

Clothing for Art/Design Technology/Food Technology - to protect school wear, aprons will be provided for all these lessons.

Cost and Suppliers

Woodhouse Academy uniform is smart, practical and cost effective. In accordance with DfE guidelines, many of the items listed are widely available in high street shops and internet suppliers. Items such as blazers and PE shirts, all with logo, are available through the official school suppliers.

Non-compliance with the school uniform policy

The school will insist that pupils wear the school uniform and that their appearance is in line with this policy. In enforcing the policy, the school will follow the guidance issued by the DfE School uniform - Guidance for school November. Within the spirit of partnership, the school would wish to

WOODHOUSE ACADEMY

UNIFORM POLICY

Reviewed Spring 2022
To be reviewed: Spring 2023

resolve uniform/appearance issues through consultation with families and will only remove pupils from lessons as a last resort.

Roles and Responsibilities. All adults working in the school are expected to monitor the implementation of the school uniform policy. Where correction is needed, the tutor must be informed. Tutors will:

- Oversee pupil appearance at morning registration. Those arriving in school without correct uniform will be sent to the office/KS lead where a member of the team will arrange for the pupil to borrow a correct item of clothing / footwear, which will be required to be returned at the end of the day. In the case of shoes, the pupil will leave their own shoes with the office for the day and then exchange them back at the end of the day.
- Discreetly try to establish why a pupil is not wearing uniform.
- Request removal of inappropriate items e.g. jewellery / make up.
- Make contact with parents to inform them of their child's non-compliance with the uniform/appearance policy.
- Refer pupil to the KS leader where there is continued breach of uniform policy.

Pupils who continually breach the school uniform policy may be put on to uniform report. Initially, this will be with the KS leader but if no improvement is seen then it will be moved up to a SLT uniform report.

The Principal (or another member of staff with delegated responsibility) will, following contact with parents:

- Discipline a child for continued breach of the uniform policy.
- Send a pupil home to change clothing /appearance without formally excluding them.

Where a child is not wearing correct uniform because parents are in financial difficulties, the school will be sensitive to the needs of the pupil; we will discreetly provide items of clothing or loan them until new items can be purchased.

All parents are asked to support this policy in a spirit of cooperation for the benefit of all pupils.

WOODHOUSE ACADEMY UNIFORM POLICY

Reviewed Spring 2022
To be reviewed: Spring 2023

Appendix 1

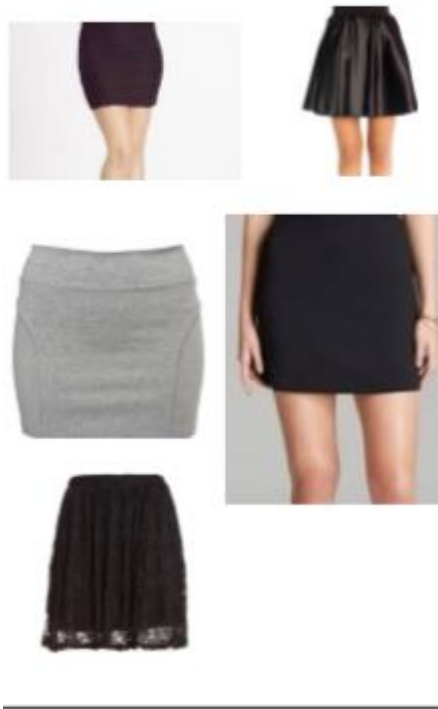
Examples of Acceptable and unacceptable items of uniform

Skirts

Acceptable



Not acceptable



WOODHOUSE ACADEMY UNIFORM POLICY

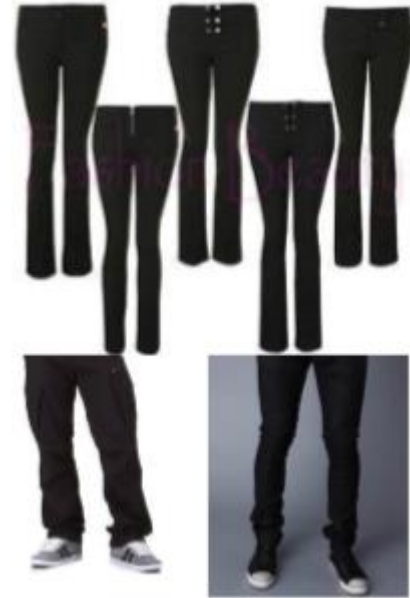
Reviewed Spring 2022
To be reviewed: Spring 2023

Trousers

Acceptable



Not acceptable



Shoes

Acceptable



Not acceptable



WOODHOUSE ACADEMY UNIFORM POLICY

Reviewed Spring 2022
To be reviewed: Spring 2023

Belts

Acceptable



Not acceptable

